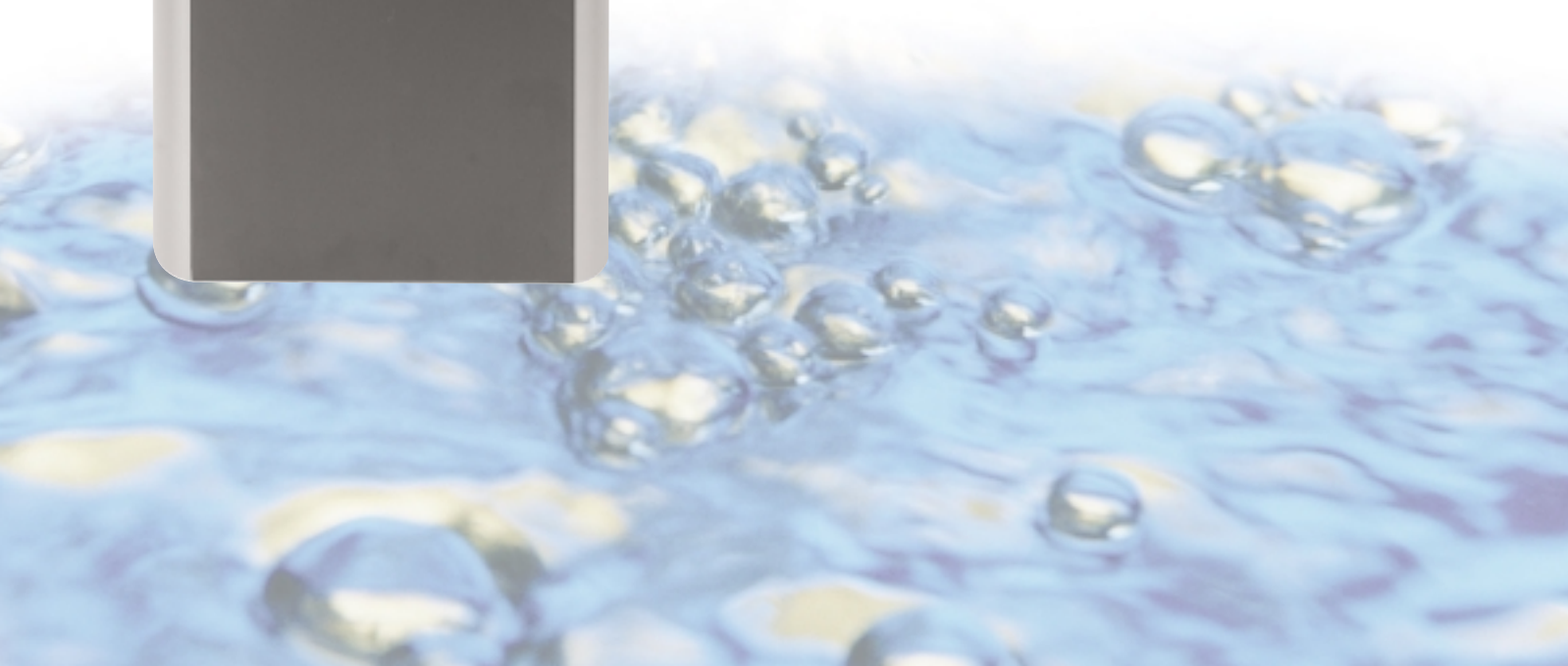
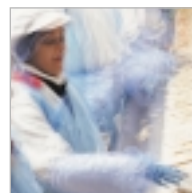
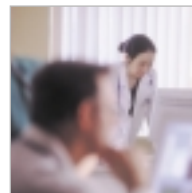


**Waterlogic**  
*Consistently pure, constantly available*



WL 2000





Everyone is health conscious these days. So, you want your staff, customers and visitors to have access to high quality drinking water – but you don't want any hassle. We can offer a refreshingly simple answer: **The WL 2000.**

The WL 2000 mains-fed water dispenser, delivers an instant and constant supply of high quality drinking water. It also comes in a choice of cold only or hot and cold models, providing chilled and instant hot water through the same dispenser. This enables hot drinks to be made without wasting time waiting for kettles to boil.

Because the WL 2000 unlike bottled water coolers, is supplied through the mains, it does away with the problems of storage, lifting heavy water bottles, degradation and sanitisation, not to mention running out.

Instead, you get features such as ergonomic design that compliments every environment and 'direct chill' technology to guarantee water to be fresh every time. With cost savings in terms of supplies and precious time over bottled water coolers, Waterlogic makes everyone's life easier.

### Features: WL 2000

- Direct chill technology
- Basic water purification by carbon filtration (1 micron)
- Large drip tray (1.4 litres capacity)
- Constant supply of chilled filtered water preset to 5°C
- Instant hot water preset to 87°C with safety features: hot and cold model
- Power-on indicator light
- Hot water indicator light (hot and cold model)



### Options: WL 2000

The WL 2000 is available in the following:

**Colour:** Silver/charcoal grey

**Water:** Hot and cold or cold only

**Size:** Freestanding or table top

**Cup stack unit:** Black, white or silver

### Machine weight

WL 2000 hot and cold freestanding:	24kg
WL 2000 cold only freestanding:	22kg
WL 2000 hot and cold table top:	22kg
WL 2000 cold only table top:	20kg

### Installation requirements

To ensure that the Waterlogic machine can be installed quickly and smoothly in your proposed location, each machine will require a 13 amp (240 AC) switched socket which should not be more than one metre from the machine.

Each plumbed water machine needs to be supplied with water from a rising main. Machines cannot be connected to a storage tank water supply. The pipe work should ideally be no more than one metre from the machine although our in-house service team are able to install machines in the majority of locations. Pipe work must be terminated with a 15mm BS1010 stopcock.

